

# P O R T F O L I O



REFLECTING LUXURY IN EVERY DIMENSION

# OUR SERVICES



## LUXURY INTERIOR DESIGN

Bespoke interiors crafted with refined detailing, timeless materials, and personalized experiences.

## RENOVATION & CIVIL WORKS

Precision-led remodeling and structural enhancement executed with quality craftsmanship.

## ARCHITECTURE & SPACE PLANNING

Thoughtfully designed spaces balancing aesthetics, functionality, and spatial flow.

## RESIDENTIAL & COMMERCIAL INTERIORS

Tailored environments designed to elevate lifestyle, productivity, and brand identity.

## DESIGN CONSULTATION

Strategic guidance for planning, styling, budgeting, and design direction.

## TURNKEY DESIGN & EXECUTION

End-to-end project delivery from concept to completion with seamless coordination and site supervision.

## MATERIAL & FURNITURE CURATION

Curated selections of finishes, textures, lighting, and custom furniture detailing.

# A B O U T U S



**6+ YEARS**

OF EXPERIENCE

**3,85,000+ SQ. FT.**

OF SPACE DESIGNED

**100+ PROJECTS**

COMPLETED

With a passion for excellence and a keen eye for detail, we have been transforming spaces for the past six years. Our tagline, “Reflecting Luxury In Every Dimension,” encapsulates our commitment to creating elegant and sophisticated environments that elevate your lifestyle. At Vetral, we blend creativity with functionality to deliver personalized design solutions that truly reflect your unique taste and needs. Explore the art of luxury with us and experience interiors that make a statement. At our firm, we pride ourselves on offering customized design solutions tailored to your unique style and preferences. With our commitment to on-time project completion, you can trust that your vision will come to life promptly and efficiently. Additionally, we provide peace of mind with up to a 10-year warranty on our work, ensuring quality and durability. Our advanced 3D visualization capabilities bring designs to life before implementation, allowing for a clear understanding of the final result. Let us handle the complexities of project management, so you can relax and watch your space transform seamlessly. What’s more, we prioritize transparency and accountability by adhering to your budgetary requirements throughout the design process. We work on projects across Pan India, offering our services nationwide. Choose us as your interior designer for a seamless, stress-free, and visionary experience.

## MISSION

At Vetral, we believe that great design elevates life. Our mission is to create sophisticated and functional interiors that resonate with our client's personal tastes and needs. Through a blend of creativity, innovation, and attentiveness, we turn spaces into lasting impressions.

## VISION

To set the standard for exceptional interior design by merging creativity with practicality, transforming ordinary spaces into extraordinary experiences that resonate with our clients' unique visions.

# OUR DESIGN PHILOSOPHY



Our design philosophy is rooted in the belief that every space should be a perfect balance of aesthetics, functionality, comfort, and individuality. We strive to create environments that are visually refined and timeless in appearance, while also being deeply practical and thoughtfully designed for everyday living and working. For us, design is not only about how a space looks, but also about how it feels, functions, and enhances the experience of the people using it. Every project is treated as a unique opportunity to transform ideas into meaningful spaces that reflect personality, purpose, and lifestyle.

We approach each project with a strong emphasis on thoughtful planning, spatial efficiency, attention to detail, and the seamless integration of architecture, interiors, materials, lighting, and execution. From the earliest stages of conceptual development to the final stages of on-site execution, every aspect is carefully considered to ensure that the design remains cohesive, balanced, and functional. We believe that successful design lies in the finer details – the way materials interact with light, the flow between spaces, the proportions of elements, and the harmony between textures, colours, and finishes.

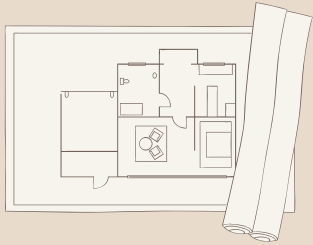
Understanding the client is at the heart of our process. We invest time in understanding each client's vision, lifestyle, aspirations, functional requirements, and aesthetic preferences so that every design solution feels personal and authentic. Rather than following trends blindly, we focus on creating timeless environments that maintain their relevance and appeal over time. Our design language combines clean lines, sophisticated material palettes, functional layouts, and carefully curated details to create spaces that are elegant yet inviting, luxurious yet comfortable, and modern yet warm in character.

We also believe that functionality should never compromise beauty. Every space is designed to maximise usability, comfort, movement, and efficiency while maintaining a strong visual identity. Whether it is a residence, commercial environment, hospitality space, or workplace, our aim is to create interiors and architectural experiences that support the client's daily life while leaving a lasting visual and emotional impact. Storage solutions, circulation planning, lighting design, furniture placement, material selection, and spatial zoning are all integrated thoughtfully to ensure a seamless user experience.

# OUR PROCESS

## 1. INITIAL CONSULTATION

Understanding the client's vision, requirements, budget, and project scope.



## 2. CONCEPT DEVELOPMENT

Creating the initial design direction, mood boards, and spatial ideas.

## 3. DESIGN PLANNING

Developing detailed layouts, drawings, and design specifications.

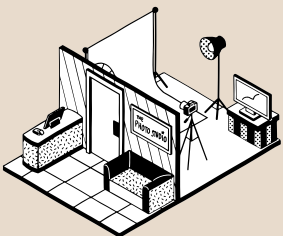


## 4. MATERIAL & FINISH SELECTION

Curating materials, textures, and finishes that align with the design concept.

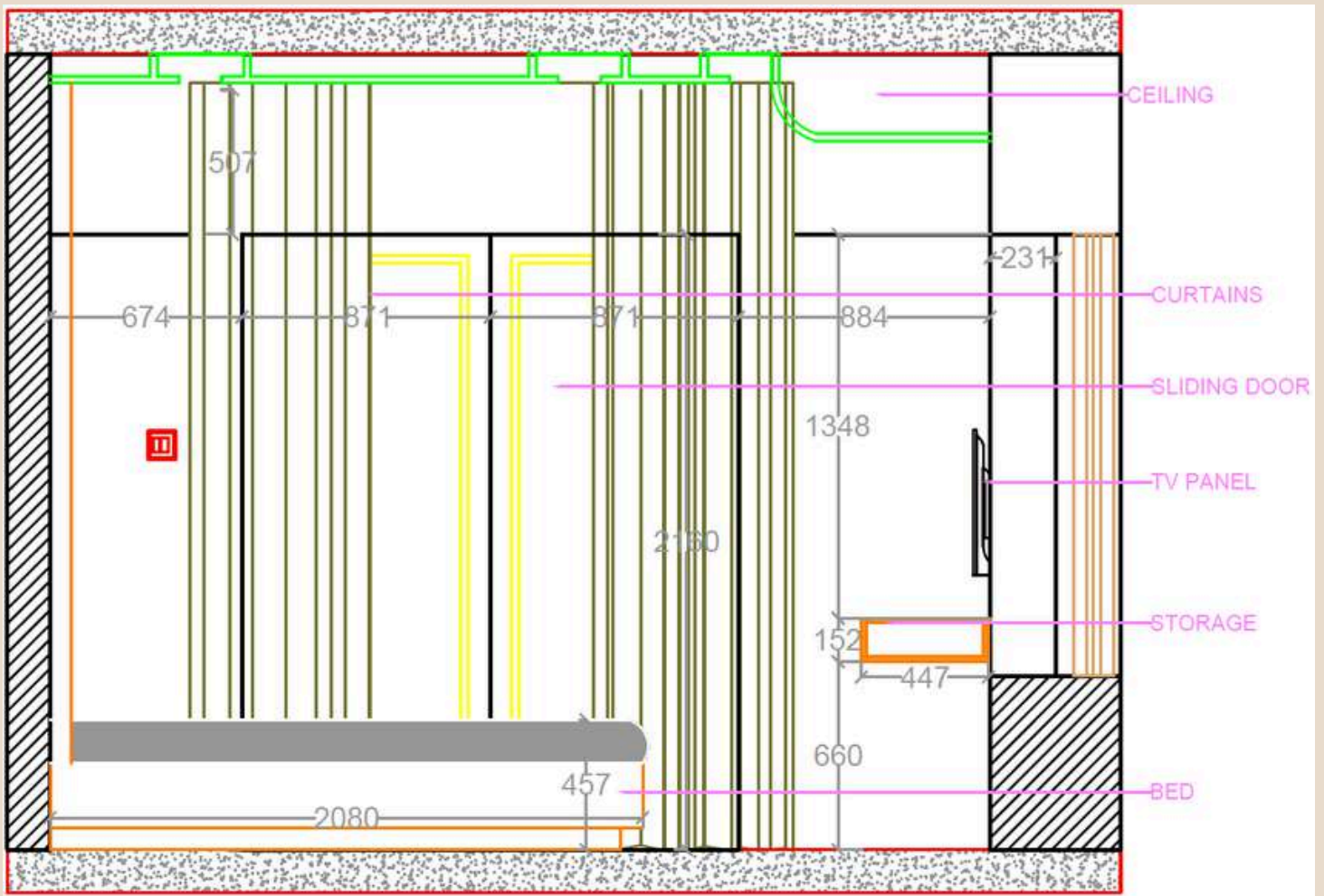
## 5. EXECUTION & SITE MANAGEMENT

Coordinating civil, architectural, and interior works with continuous site supervision.

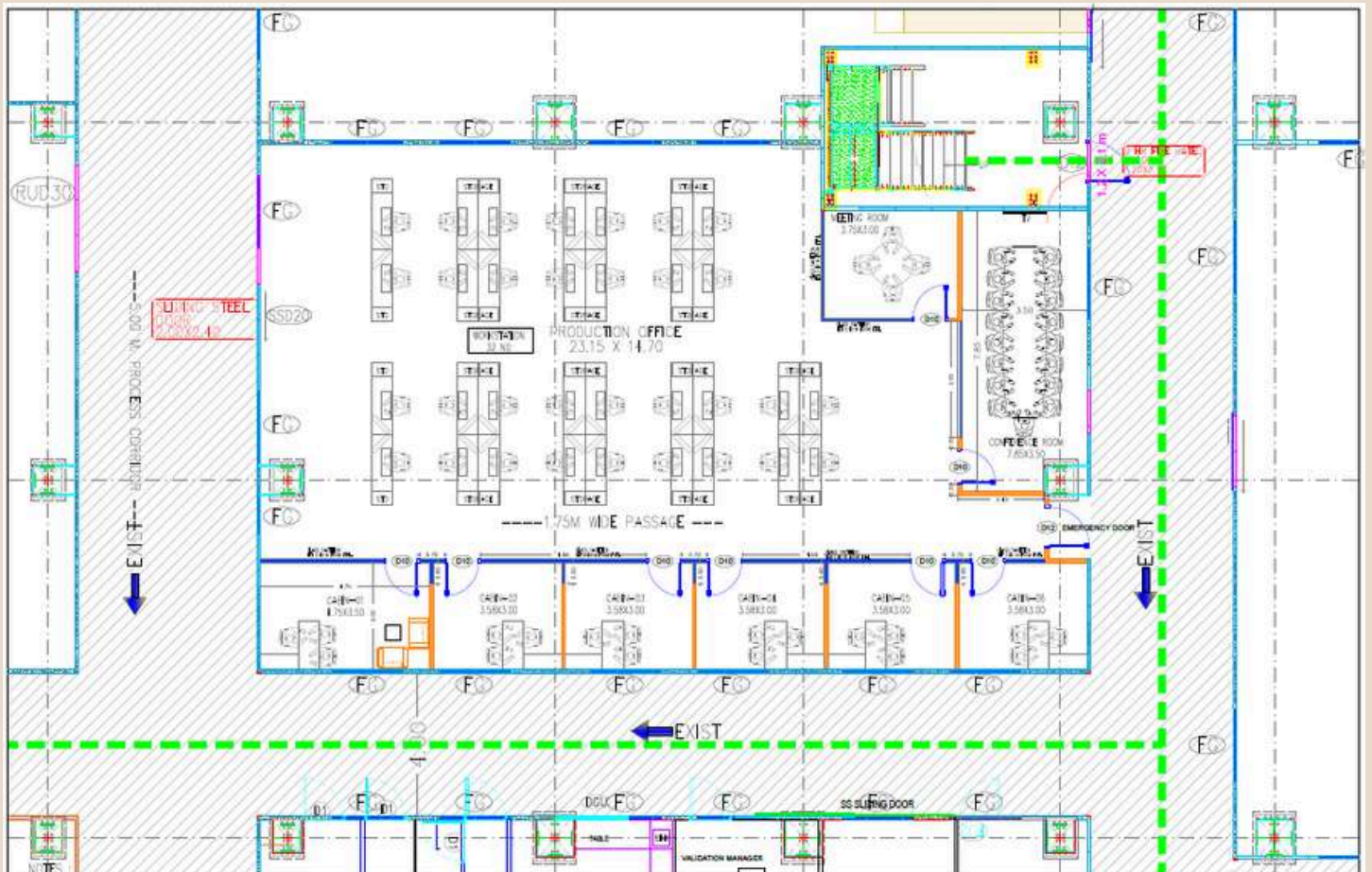


## 6. QUALITY CHECK & HANDOVER

Final detailing, quality checks, and seamless handover of the completed space.



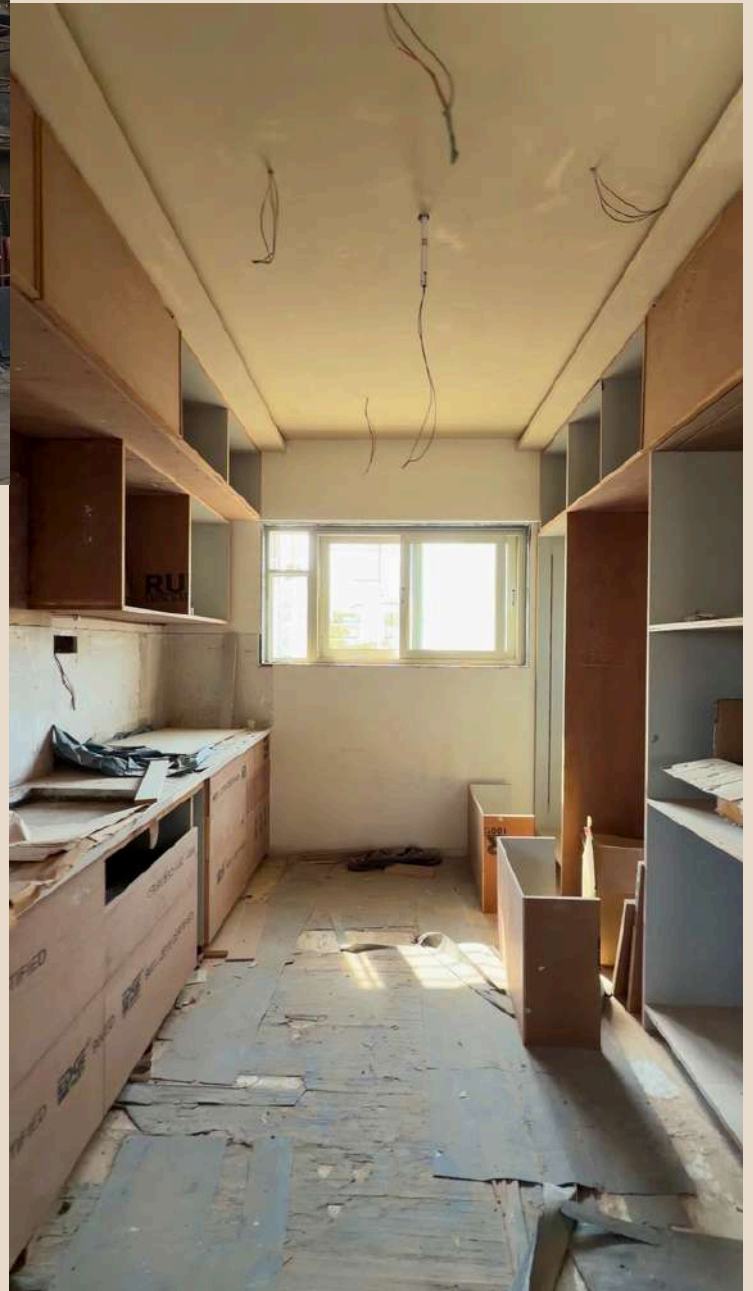
## THE PRECISION OF THE FINISH: FROM BLUEPRINT TO BREAKTHROUGH





The execution phase is a testament to the discipline required to maintain aesthetic integrity under the pressures of a live site. Every mitered edge, hand-finished surface, and integrated smart system is a deliberate choice made to honor the client's lifestyle and the building's character. This final reveal is more than a completion of a contract; it is the realization of a sanctuary where form finally meets function in perfect equilibrium. The images that follow capture these moments of clarity—where the dust of construction clears to unveil a space that is refined, enduring, and impeccably realized.

The true soul of a project is revealed in the transition from technical schematics to a tangible, lived-in reality. This stage of our process is defined by an uncompromising commitment to craftsmanship and coordination, where every structural challenge is met with a creative solution. By managing the delicate synergy between heritage artisanal techniques and modern architectural requirements, we ensure that the final result isn't just a visual replica of a render, but a tactile experience of quality. We move beyond the "what" of design to focus on the "how"—highlighting the meticulous installation of bespoke joinery, the precise alignment of luxury finishes, and the intentional layering of light that brings a room to life.



This project in SVS Excellencia, Warje, Pune was thoughtfully designed around the client's core requirement – creating a highly functional home without compromising on aesthetics or making the space feel visually heavy with bulky storage elements. The design approach focused on achieving a clean, spacious, and balanced environment while still accommodating all the practical needs of everyday living. Instead of relying on oversized cabinets and conventional storage-heavy layouts, we introduced smartly integrated solutions that seamlessly merge into the overall design language of the home.



# DESIGNING FOR FUNCTIONALITY



Every corner of the space was thoughtfully planned to maximise usability while maintaining openness and visual continuity throughout the interiors. The design approach focused on creating a space that feels light, organised, and breathable, with storage solutions integrated in a subtle and understated manner rather than visually dominating the environment. From concealed storage integrations to multifunctional design elements, every feature was carefully curated to ensure that functionality feels seamless, intuitive, and effortless in everyday use.

The material palette, finishes, and detailing were intentionally kept refined and minimal to enhance the sense of spaciousness while still adding warmth and character to the interiors. Neutral tones, clean lines, and balanced textures help create an atmosphere that feels modern, sophisticated, and timeless. Every element was selected not only for its visual appeal but also for durability, comfort, and long-term practicality.

Special attention was given to movement, convenience, and day-to-day functionality, ensuring that the home remains highly practical without compromising on aesthetics. Rather than relying on bulky storage solutions, the project reflects how thoughtful planning and strategic design can create interiors that feel elegant, uncluttered, and highly functional while maintaining a calm and cohesive visual language throughout the space.



A contemporary and impactful sales office exterior design for the Hublikar Project on Sinhgad Road, Pune, envisioned to establish a strong visual identity and memorable first impression.



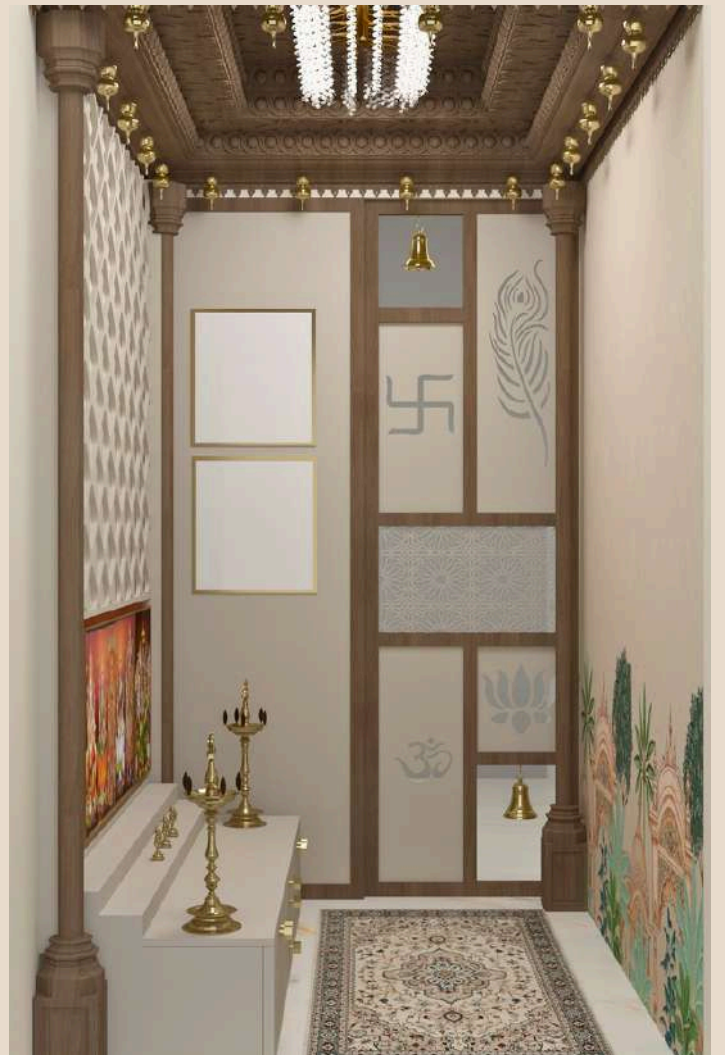


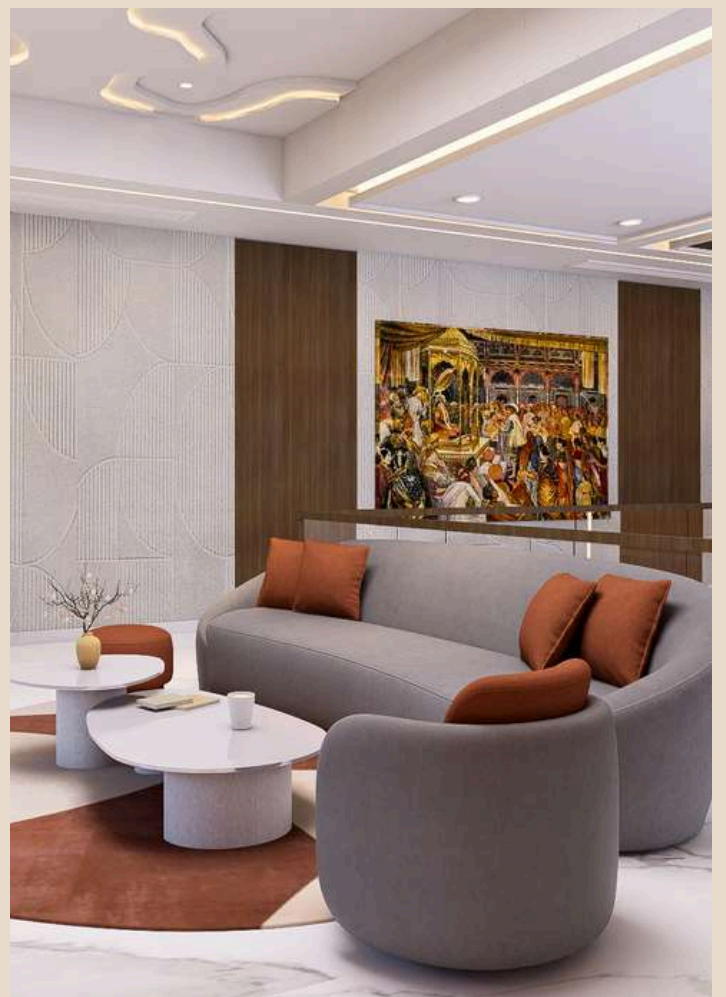
The design blends modern architectural elements, elegant material palettes, and welcoming spatial aesthetics to reflect sophistication, trust, and premium urban living.





**A STATEMENT IN MODERN RESIDENTIAL DESIGN - 4 BHK DUPLEX HOME**







A refined residential interior designed to balance timeless aesthetics, comfort, and everyday functionality.





A contemporary biophilic workspace proposal for Canpack that blends modern minimalism with vibrant brand expression. The double-height atrium, integrated greenery, soft ambient lighting, and fluid seating elements create a refreshing and collaborative environment that reflects innovation, energy, and sustainability.





The Modern Abode is a thoughtfully designed 2BHK residence that reflects a seamless blend of contemporary aesthetics, comfort, and functionality. The interiors are crafted with a refined design language that focuses on clean lines, balanced proportions, and a warm, inviting atmosphere. Every space within the home has been carefully planned to maximise usability while maintaining a sense of openness and visual continuity throughout the interiors.

A neutral and elegant material palette, complemented by subtle textures, soft lighting, and carefully curated finishes, creates an environment that feels sophisticated yet comfortable for everyday living. From intelligently integrated storage solutions to multifunctional design elements, each detail has been considered to ensure that practicality remains effortless without compromising the overall visual appeal.





## THE MODERN ABODE





HINDUSTAN COCA-COLA BEVERAGES PVT LTD





PRODUCTION PLANT, CHIPLUN.





# LUXELINE





# R E S I D E N C E





The Refined Workspace is designed as a seamless blend of sophistication, functionality, and modern efficiency. The space reflects a clean and contemporary design language where every element is thoughtfully curated to enhance productivity while maintaining a calm and professional atmosphere. A balanced material palette, subtle textures, refined lighting, and carefully planned spatial layouts create an environment that feels both elegant and highly practical. The design focuses on openness, comfort, and visual clarity, ensuring that the workspace supports collaboration, creativity, and everyday functionality while leaving a lasting impression of understated luxury and timeless professionalism.

Every corner is crafted to optimise workflow while preserving a sense of spaciousness and visual harmony throughout the office. The integration of smart storage solutions, ergonomic planning, and layered lighting enhances both usability and employee comfort without compromising the overall aesthetic.





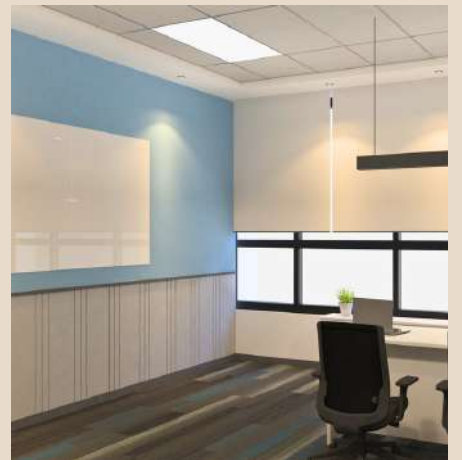
## THE REFINED WORKSPACE





Timeless Harmony is a thoughtfully designed 2BHK residence that blends modern elegance with everyday functionality. Defined by a warm neutral palette, clean lines, and refined detailing, the interiors create a calm and sophisticated living experience that feels both timeless and inviting.





**ELEVATED WORK ENVIRONMENTS**





## THE QUIET INTERIOR



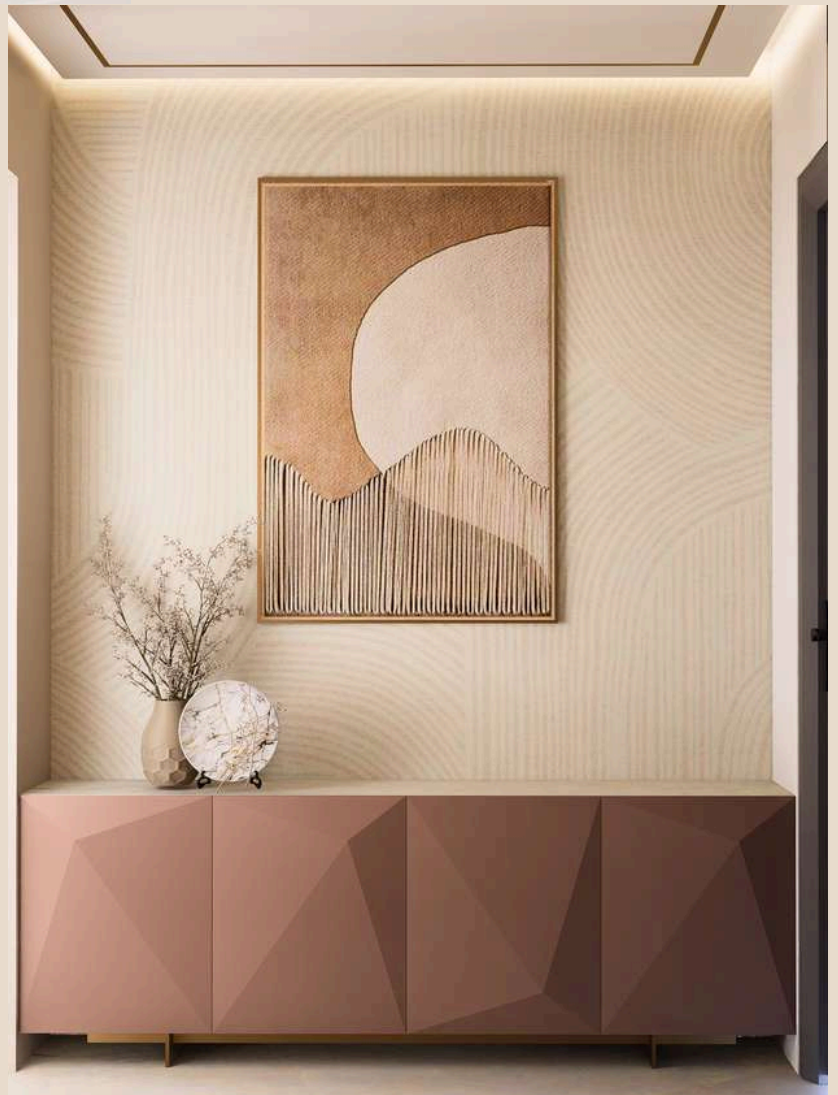


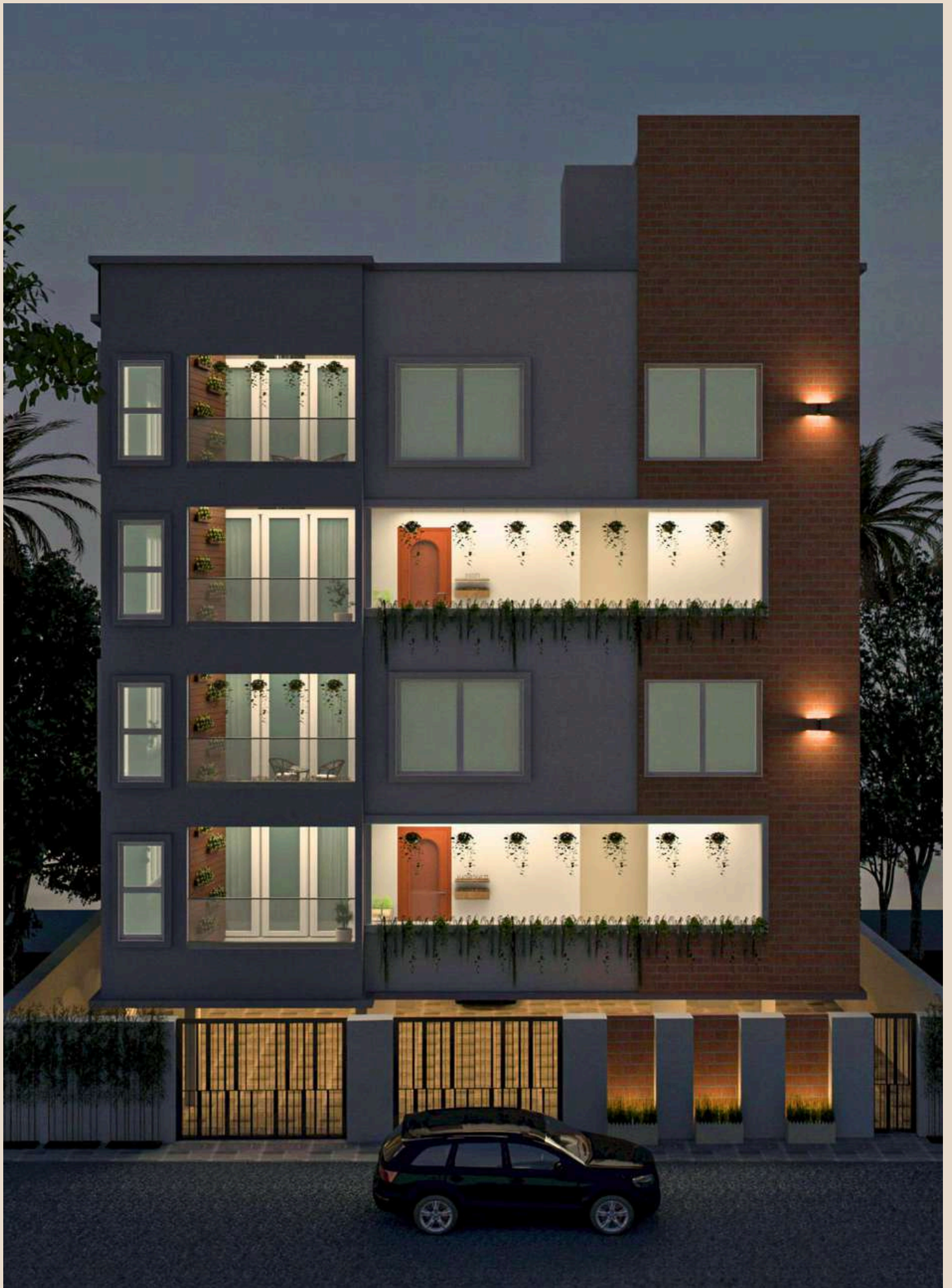
The Quiet Interior is a design philosophy rooted in simplicity, calmness, and timeless modern living. Conceived as a minimal yet warm 2BHK residence, the project focuses on creating an environment that feels visually light, emotionally comforting, and effortlessly functional. Every space within the home has been carefully curated to achieve a sense of balance where aesthetics and practicality coexist seamlessly without overpowering one another.

The interiors are defined by clean architectural lines, soft neutral tones, understated textures, and a restrained material palette that together establish a calm and sophisticated atmosphere. Instead of relying on excessive ornamentation, the design embraces subtle detailing and refined proportions to create spaces that feel elegant in a quiet and understated manner. The overall visual language remains minimal, yet rich in depth through thoughtful layering of materials, lighting, and textures.

A strong emphasis was placed on spatial planning to ensure that the home feels open, breathable, and highly functional despite the compact nature of a 2BHK layout. Every corner was intentionally designed to maximise usability while maintaining visual continuity throughout the residence. Concealed storage integrations, multifunctional furniture elements, and seamless design transitions help keep the interiors uncluttered and organised, allowing the spaces to retain their serene character.

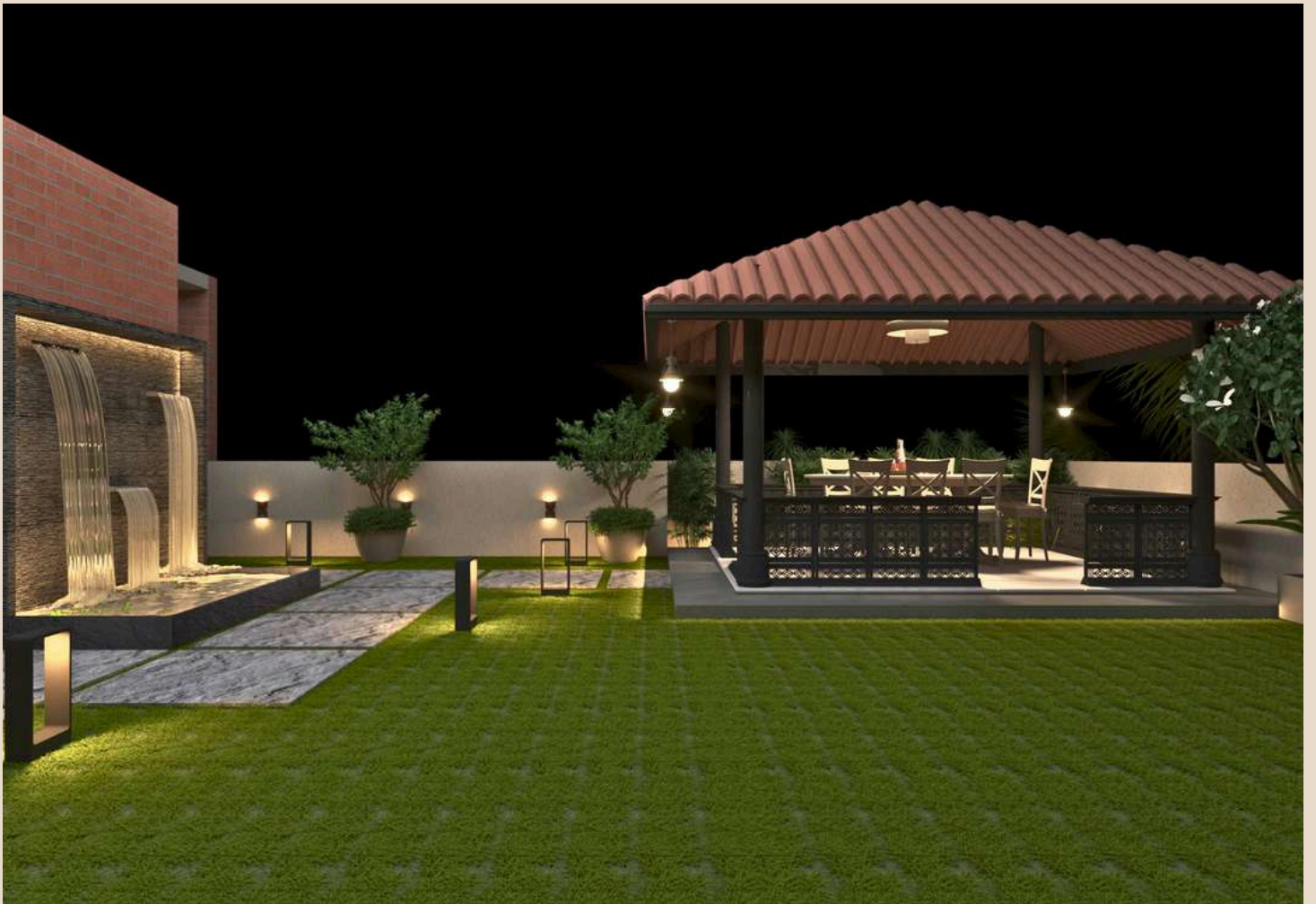
Natural light plays an important role in shaping the mood of the home. Large openings, soft ambient lighting, and reflective surfaces were carefully considered to enhance brightness and create a gentle flow between different areas. The colour palette primarily consists of warm whites, muted greys, soft beige tones, natural wood textures, and subtle accents that contribute to the overall feeling of calm sophistication and quiet luxury.





ARCHITECTURAL ELEVATION DESIGN









The interiors are crafted with a harmonious blend of rich materials, subtle textures, and thoughtfully curated details that create a sense of understated luxury.





Every space is designed to feel sophisticated yet comfortable, delivering a timeless atmosphere that balances modern aesthetics with everyday living.





VETRAL

REFLECTING LUXURY IN EVERY DIMENSION

SCAN FOR DETAILS

